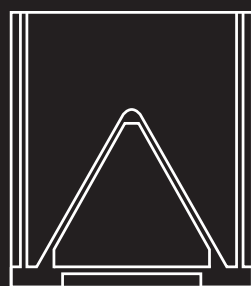


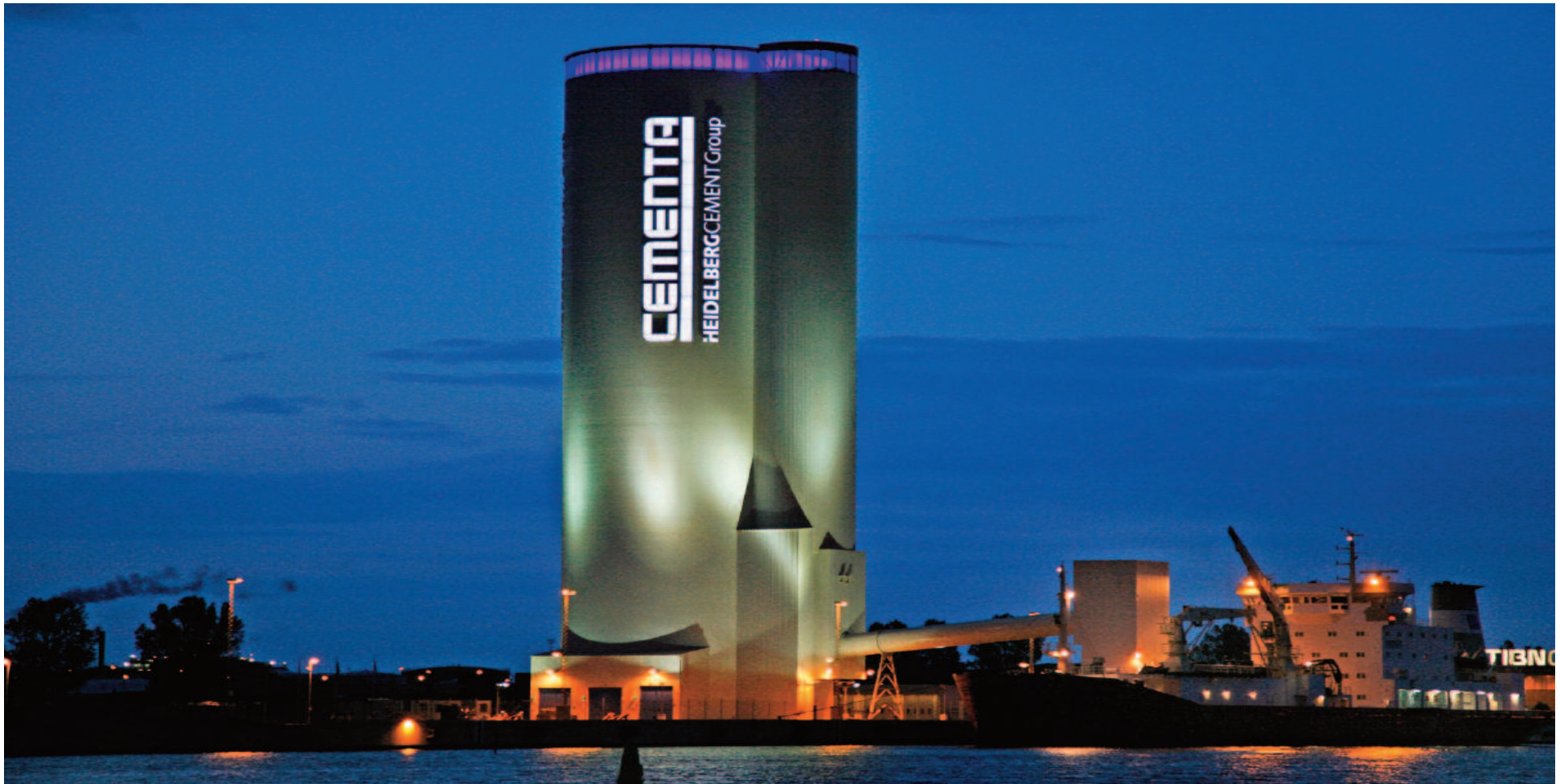


The new Cement Import Terminal in Malmö

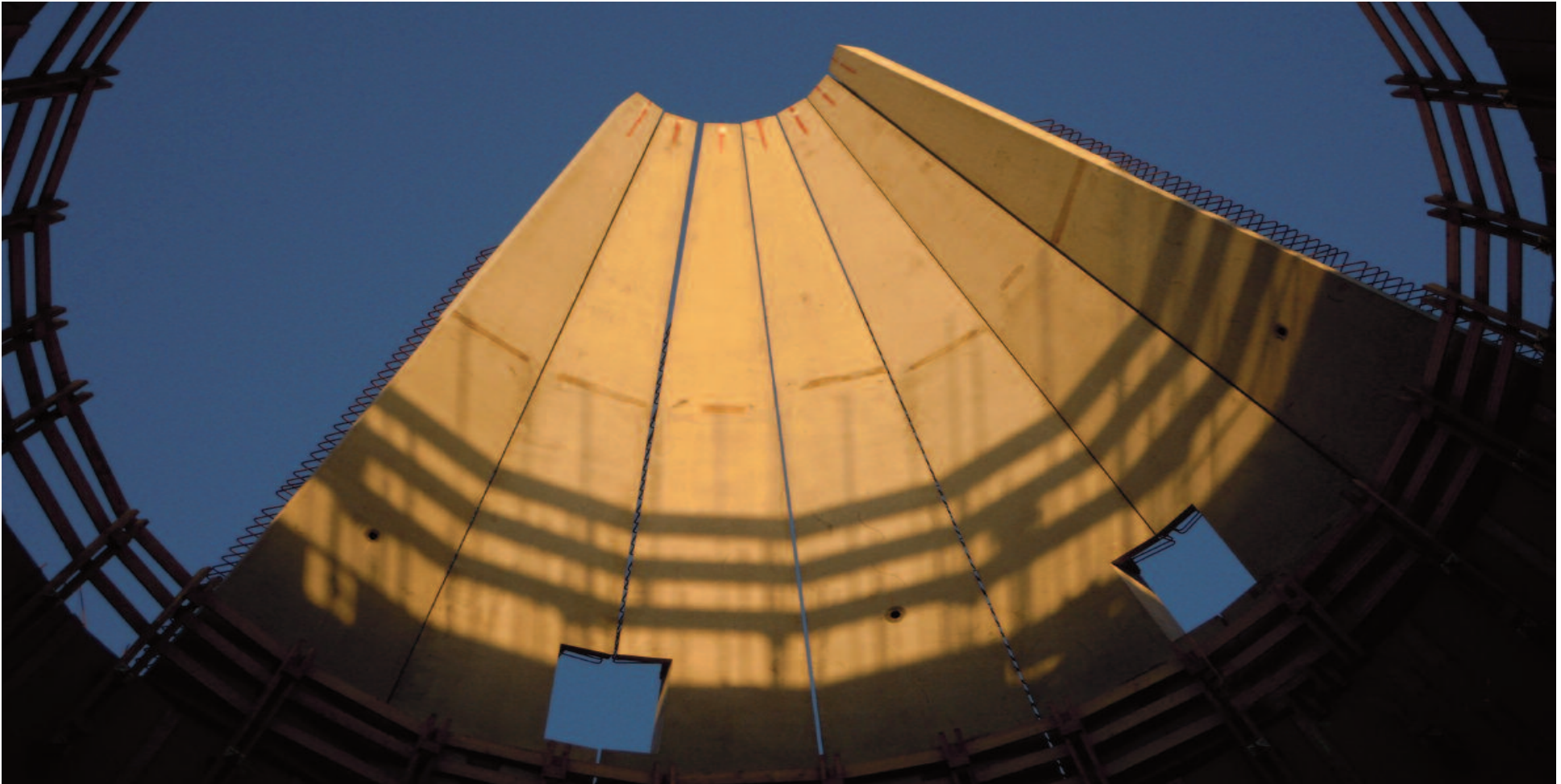


IBAU
HAMBURG

More ...



In March 2012 IBAU HAMBURG has officially handed over during an inauguration ceremony the new Cement Import Terminal in the Malmö Northern Harbour to Cemente AB, being part of the HeidelbergCement Group.

[More ...](#)

IBAU HAMBURG successfully completed the 18 months construction and commissioning phase **without any accidents, without any delay.**

Malmö's new landmark: The Malmö Cement Terminal



The Cementa own ships can discharge at the terminal with up to 1,000 t/h.

The cement is fed to a multi-compartment storage silo, which has a height of 90 metres, a diameter of 26 metres, consisting of 6 chambers with a total capacity of 30,000 tonnes.

The distribution takes place via three combined truck/wagon loading lanes, each with a capacity of 250 t/h.

The whole Terminal can be operated 365 days/year and 24 hrs/day fully automatically.

According to the Mayor of the City of Malmö, the new Cement Import Terminal with its unique design has now become a new landmark in the Öresund Region.

[THE CONTRACT](#)[ENGINEERING](#)[PROCUREMENT](#)[CONSTRUCTION](#)[VIDEO](#) [IBAU ACTIVITIES](#)[CONTACT](#)

2 / 8

The EPC-Contract included:



1. Piling works



2. Civil works



3. Steel construction



4. Mechanical erection



5. Electrical erection



6. Commissioning

THE CONTRACT

ENGINEERING

PROCUREMENT

CONSTRUCTION

VIDEO 

IBAU ACTIVITIES

CONTACT

3 / 8



1. Piling works

THE CONTRACT

ENGINEERING

PROCUREMENT

CONSTRUCTION

VIDEO 

IBAU ACTIVITIES

CONTACT

4 / 8



2. Civil works

THE CONTRACT

ENGINEERING

PROCUREMENT

CONSTRUCTION

VIDEO 

IBAU ACTIVITIES

CONTACT

5 / 8



3. Steel construction

THE CONTRACT

ENGINEERING

PROCUREMENT

CONSTRUCTION

VIDEO 

IBAU ACTIVITIES

CONTACT

6 / 8



4. Mechanical erection

THE CONTRACT

ENGINEERING

PROCUREMENT

CONSTRUCTION

VIDEO 

IBAU ACTIVITIES

CONTACT

◀ 7 / 8 ▶



5. Electrical erection

THE CONTRACT

ENGINEERING

PROCUREMENT

CONSTRUCTION

VIDEO 

IBAU ACTIVITIES

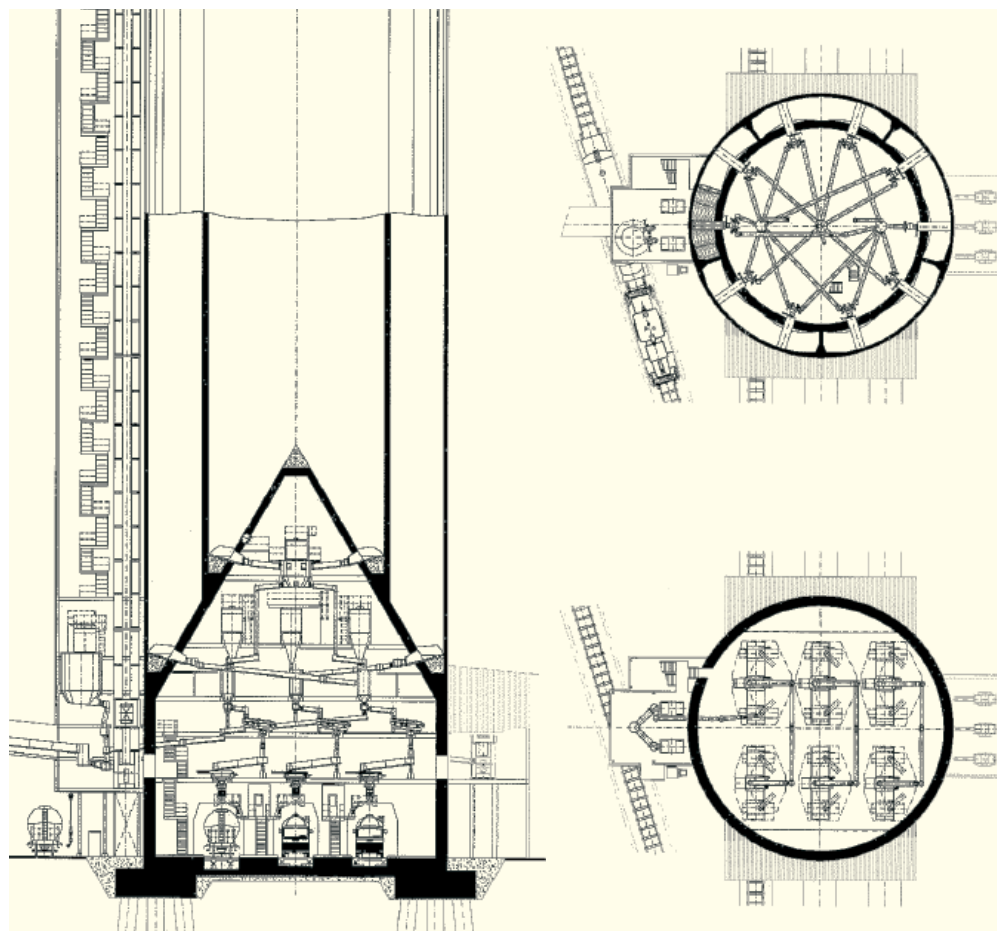
CONTACT

8 / 8



6. Commissioning

The Malmö Cement Terminal: Engineering



The complete plant engineering for:

- Mechanical operation
- Civil works
- Steel structure
- Electric design
- Automation

have been included in the contract. Whereby, all static calculations and structural drawings have been checked and approved by a third-party consultant, appointed by CEMENTA.

During an approximate engineering phase of 3 months, more than 400 drawings have been executed in order to enable a smooth project execution.

The terminal concept itself has been developed by IBAU HAMBURG in close coordination with the CEMENTA project team.

THE CONTRACT

ENGINEERING

PROCUREMENT

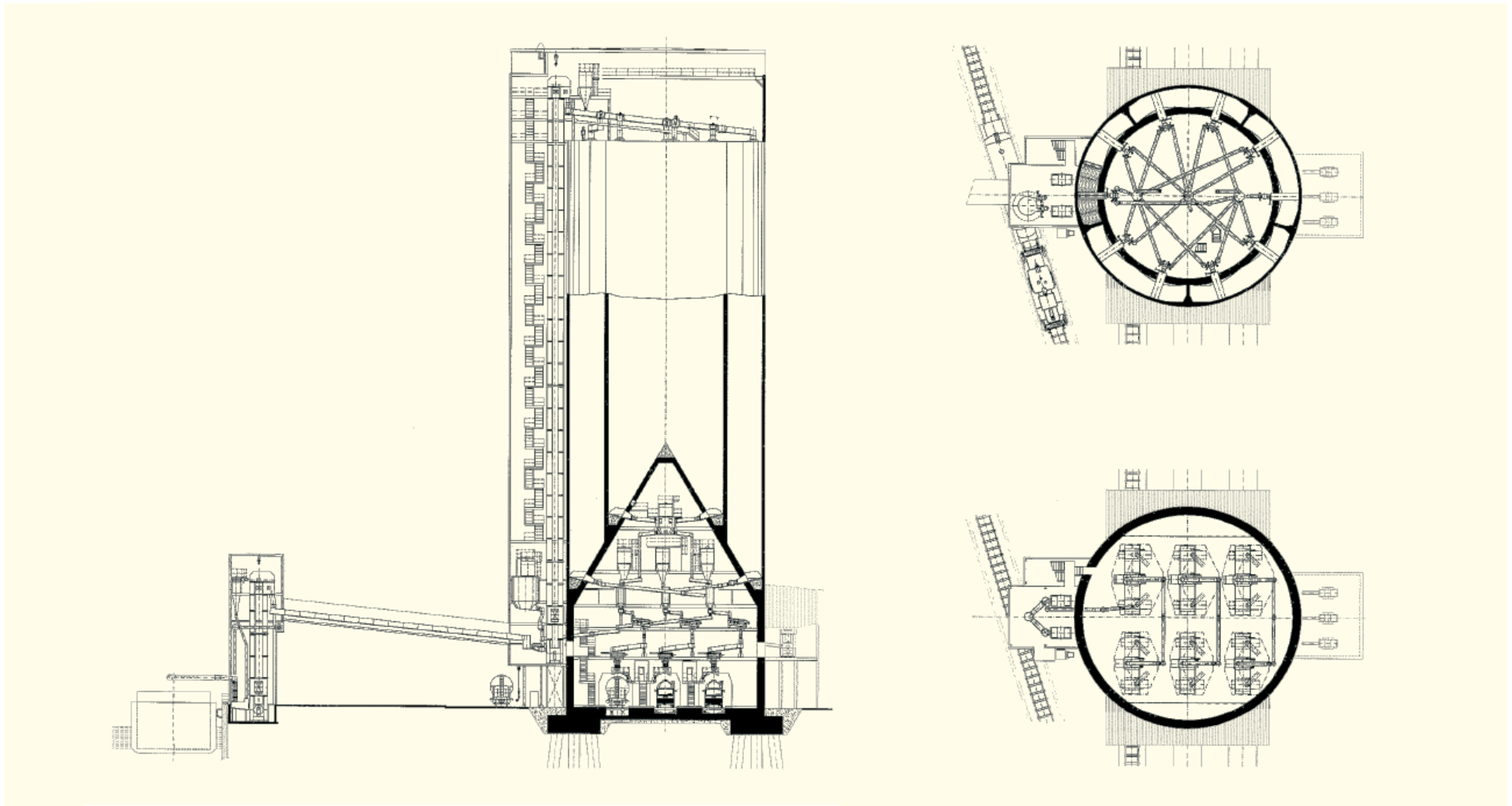
CONSTRUCTION

VIDEO 

IBAU ACTIVITIES

CONTACT

◀ 2 / 2



View of the Cement Terminal of Cemente A.B. / HeidelbergCement Group, Malmö, Sweden.



The Malmö Cement Terminal: Procurement



The installed state-of-the-art equipment is manufactured purely by European premium class suppliers, whereby the final quality control took place in the IBAU HAMBURG workshops.

The ship discharge, silo feeding and extraction are fully automated, which allows only 1 operator to handle the complete terminal.

After installation of the complete mechanical and electrical equipment, a third-party consultant has checked the plant in order to ensure that the compatibility with the very high EC Machinery Directive Safety Standard.

[THE CONTRACT](#)[ENGINEERING](#)[PROCUREMENT](#)[CONSTRUCTION](#)[VIDEO](#) [IBAU ACTIVITIES](#)[CONTACT](#)

2 / 8

The Malmö Cement Terminal: Procurement



1. Transport for silo discharge airslide



2. Ventilation pipe cone



3. Typical silo discharge section



4. Silo feeding airslides



5. Material screening before bulk loading



6. Silo mounting frame
for discharge of inner silo

[THE CONTRACT](#)[ENGINEERING](#)[PROCUREMENT](#)[CONSTRUCTION](#)[VIDEO !\[\]\(a870788d6ed9b8fd294b7654a8c8526b_img.jpg\)](#)[IBAU ACTIVITIES](#)[CONTACT](#)[<](#) 3 / 8 [>](#)

1. Transport for silo discharge airslide

THE CONTRACT

ENGINEERING

PROCUREMENT

CONSTRUCTION

VIDEO 

IBAU ACTIVITIES

CONTACT

◀ 4 / 8 ▶



2. Ventilation pipe cone

THE CONTRACT

ENGINEERING

PROCUREMENT

CONSTRUCTION

VIDEO 

IBAU ACTIVITIES

CONTACT

◀ 5 / 8 ▶



3. Typical silo discharge section

THE CONTRACT

ENGINEERING

PROCUREMENT

CONSTRUCTION

VIDEO 

IBAU ACTIVITIES

CONTACT

◀ 6 / 8 ▶



4. Silo feeding airlines

THE CONTRACT

ENGINEERING

PROCUREMENT

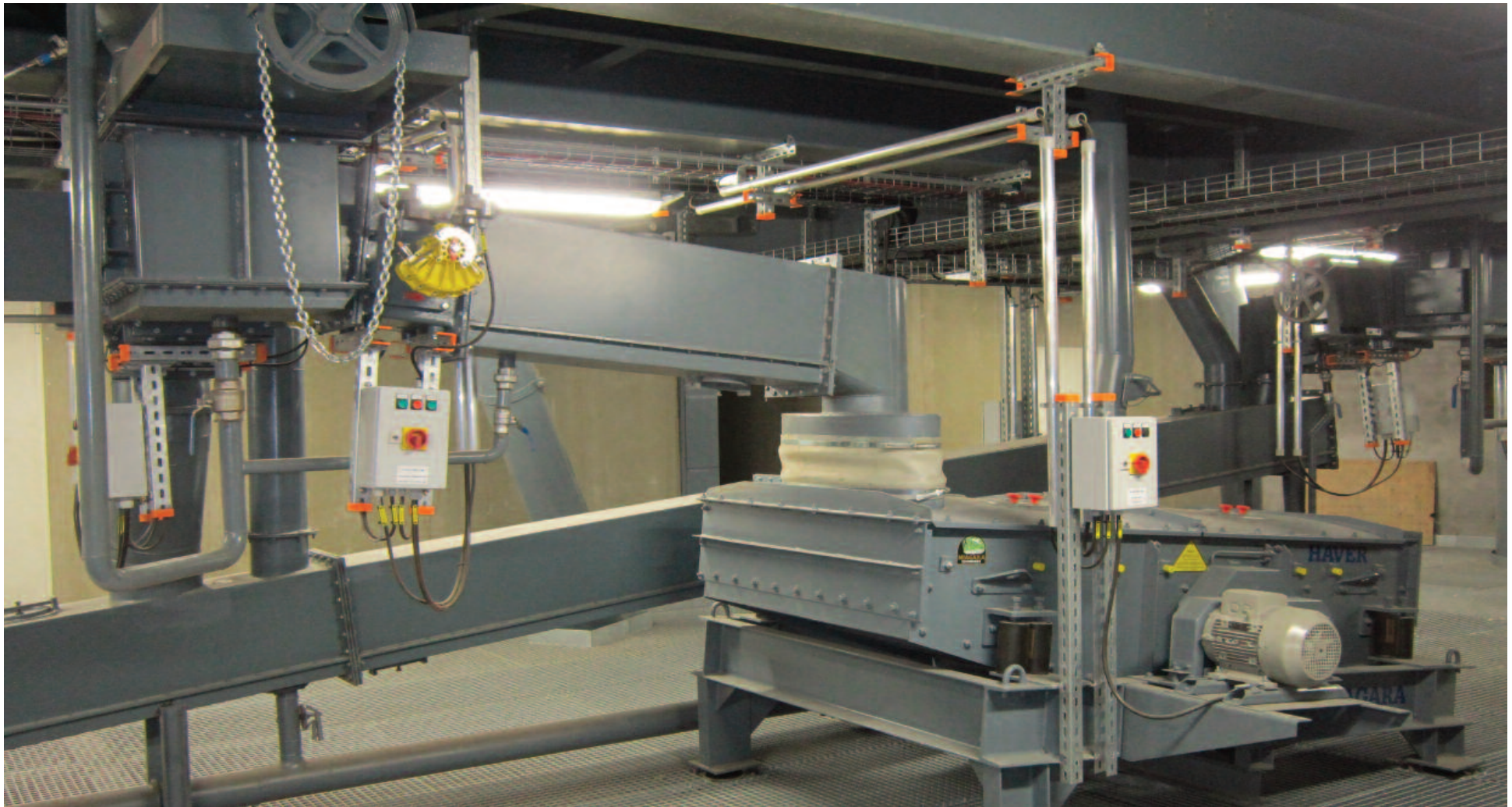
CONSTRUCTION

VIDEO 

IBAU ACTIVITIES

CONTACT

◀ 7 / 8 ▶



5. Material screening before bulk loading

THE CONTRACT

ENGINEERING

PROCUREMENT

CONSTRUCTION

VIDEO 

IBAU ACTIVITIES

CONTACT

8 / 8

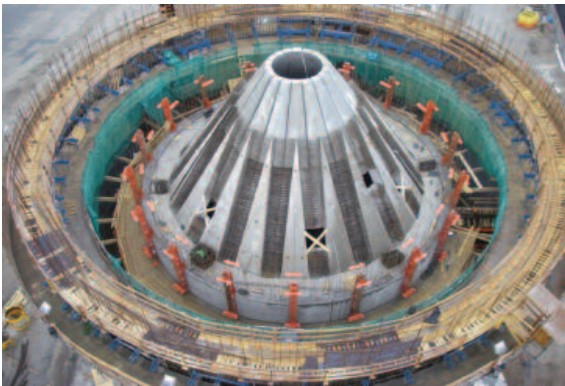


6. Silo mounting frame for discharge of inner silo

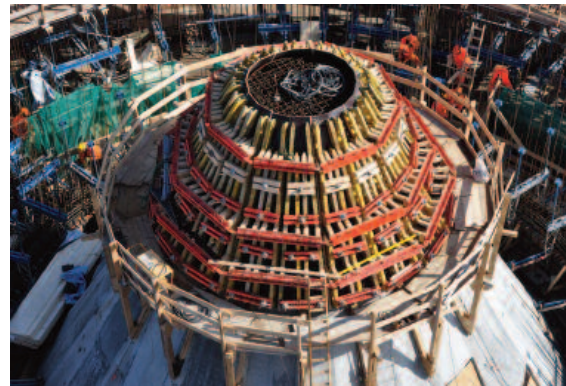
[THE CONTRACT](#)[ENGINEERING](#)[PROCUREMENT](#)[CONSTRUCTION](#)[VIDEO !\[\]\(a870788d6ed9b8fd294b7654a8c8526b_img.jpg\)](#)[IBAU ACTIVITIES](#)[CONTACT](#)

1 / 7

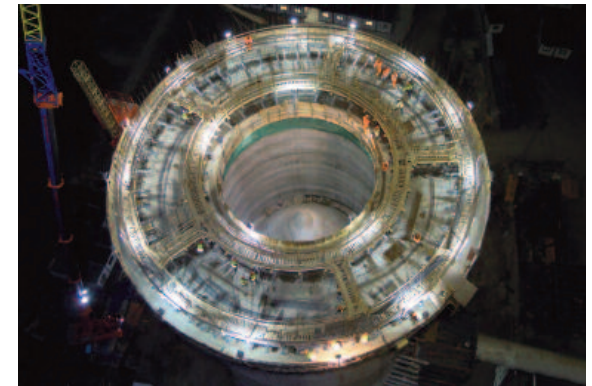
The Malmö Cement Terminal: Construction



1. Line up of prefabricated cone elements



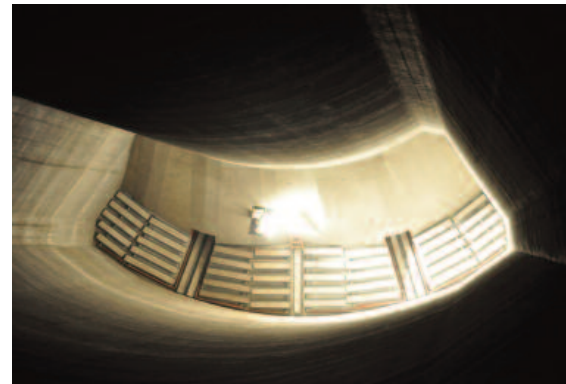
2. Casting of upper cone



3. Sliding of silo chambers



4. Top view of central chamber with 10.000 t capacity



5. Outer chamber with 4.000 t capacity



6. Erection of staircase tower

THE CONTRACT

ENGINEERING

PROCUREMENT

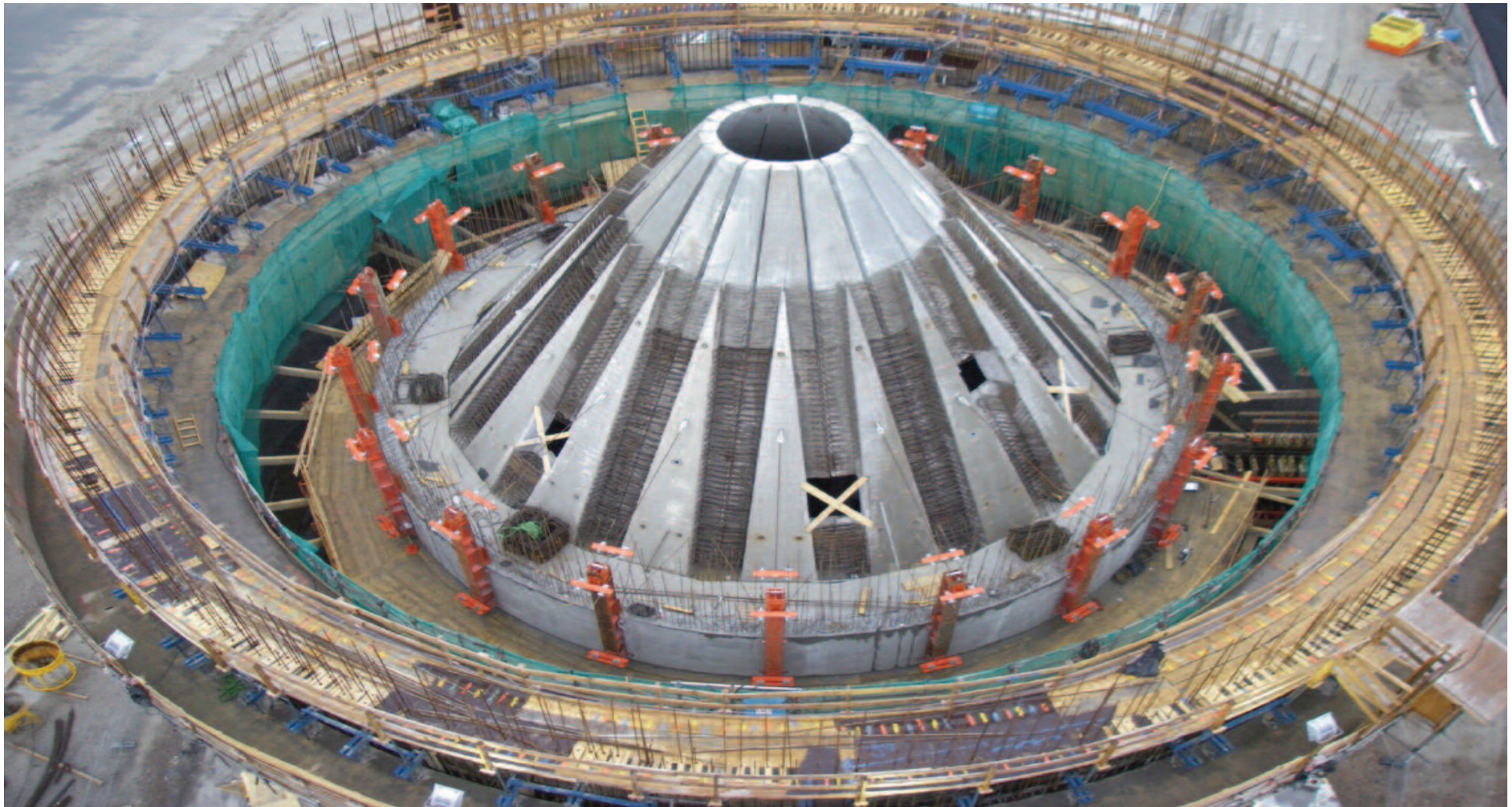
CONSTRUCTION

VIDEO 

IBAU ACTIVITIES

CONTACT

2 / 7



1. Line up of prefabricated cone elements

THE CONTRACT

ENGINEERING

PROCUREMENT

CONSTRUCTION

VIDEO 

IBAU ACTIVITIES

CONTACT

3 / 7



2. Casting of upper cone

THE CONTRACT

ENGINEERING

PROCUREMENT

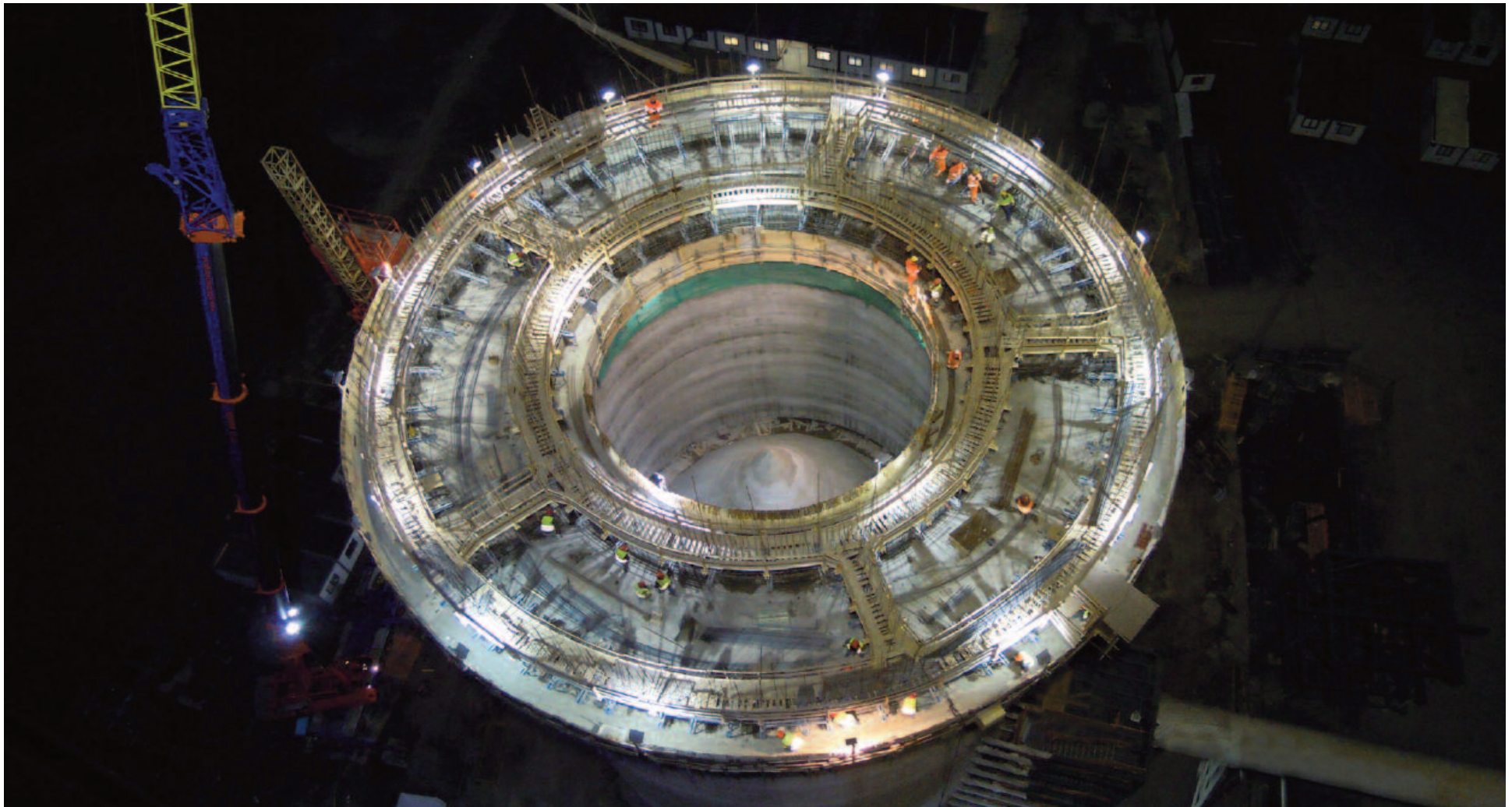
CONSTRUCTION

VIDEO 

IBAU ACTIVITIES

CONTACT

◀ 4 / 7 ▶



3. Sliding of silo chambers

THE CONTRACT

ENGINEERING

PROCUREMENT

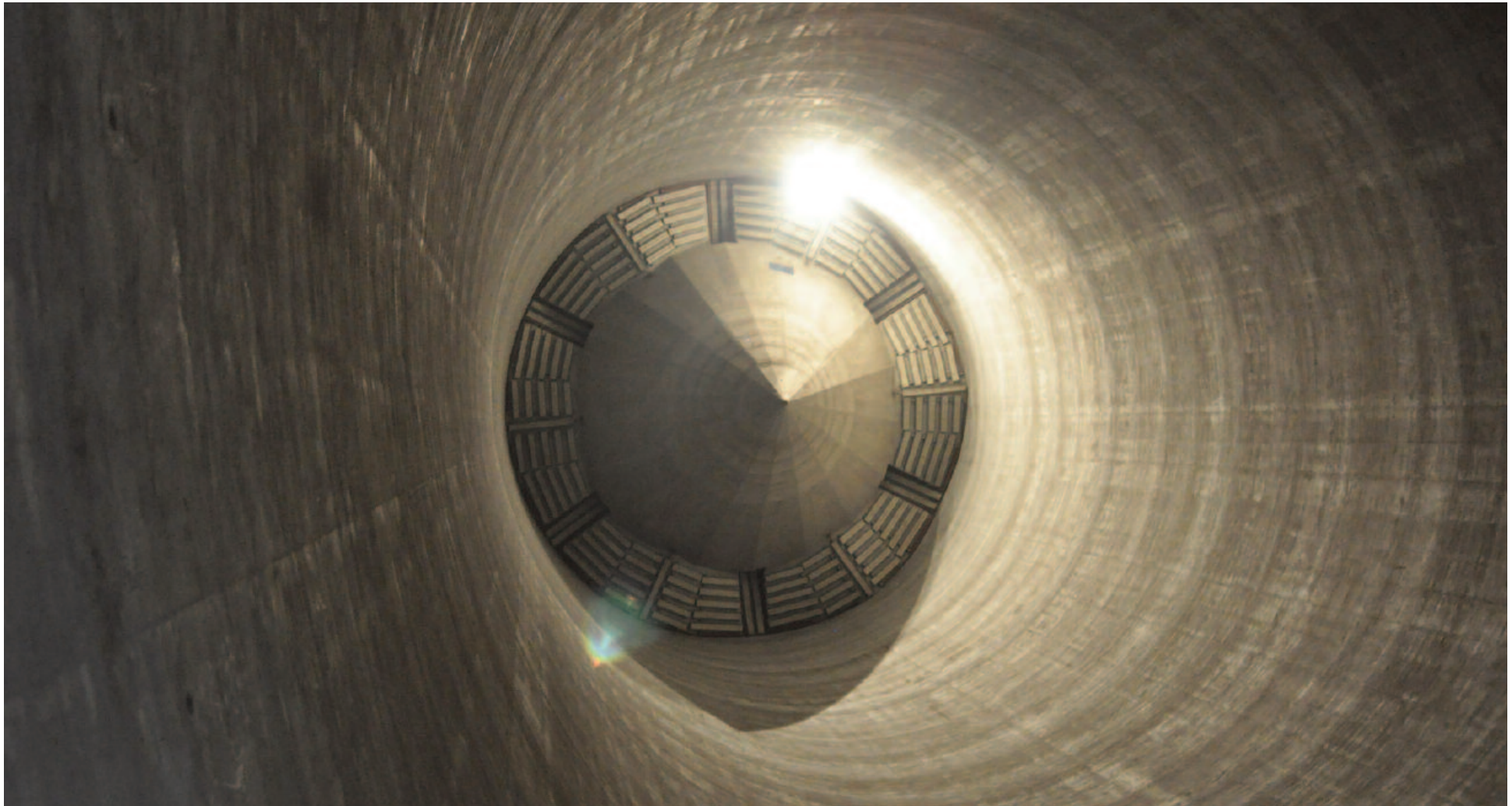
CONSTRUCTION

VIDEO 

IBAU ACTIVITIES

CONTACT

◀ 5 / 7 ▶



4. Top view of central chamber with 10.000 t capacity

THE CONTRACT

ENGINEERING

PROCUREMENT

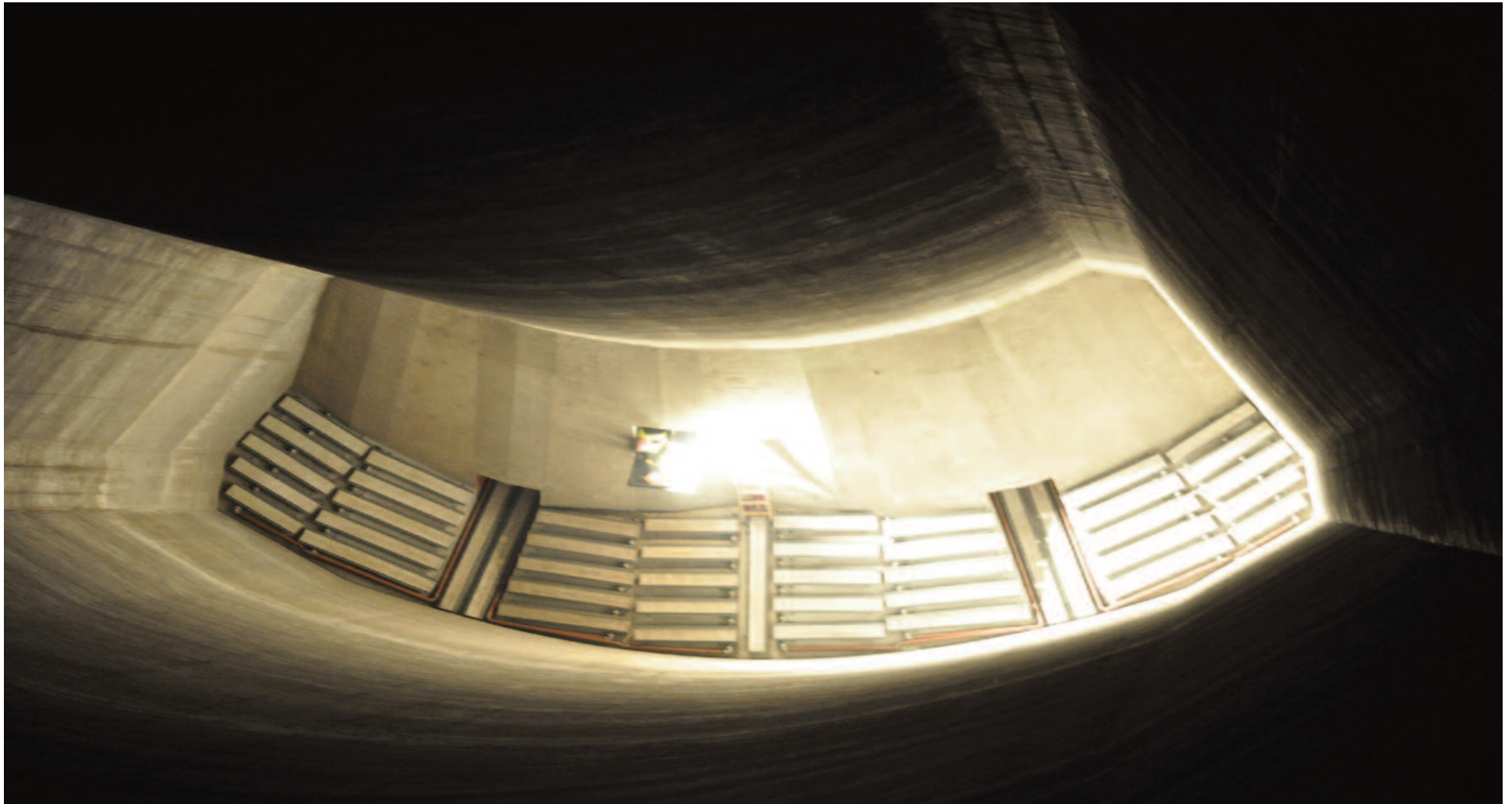
CONSTRUCTION

VIDEO 

IBAU ACTIVITIES

CONTACT

◀ 6 / 7 ▶



5. Outer chamber with 4.000 t capacity

THE CONTRACT

ENGINEERING

PROCUREMENT

CONSTRUCTION

VIDEO 

IBAU ACTIVITIES

CONTACT

◀ 7/7



6. Erection of staircase tower

[THE CONTRACT](#)[ENGINEERING](#)[PROCUREMENT](#)[CONSTRUCTION](#)[VIDEO](#) [IBAU ACTIVITIES](#)[CONTACT](#)

IBAU HAMBURG: The state-of-the-art



Raw meal blending silo



Alumina silo



High-capacity mixing plant



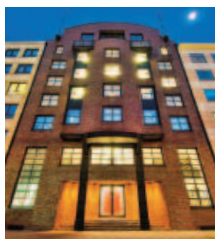
Coal-fired power plant



Ship unloader



Selfcharging cement carriers

[THE CONTRACT](#)
[ENGINEERING](#)
[PROCUREMENT](#)
[CONSTRUCTION](#)
[VIDEO !\[\]\(a870788d6ed9b8fd294b7654a8c8526b_img.jpg\)](#)
[IBAU ACTIVITIES](#)
[CONTACT](#)


IBAU HAMBURG OFFERS GLOBAL PROJECTS:

PLANT DESIGN. ENGINEERING. EPC-CONTRACTING.

- Airslide systems.
- Individual components such as flow-control and cut-off gates, rotary bottom and rotary side dischargers.
- Bulk loading technology.
- Mechanical material transport using screws.
- Pneumatic tube conveyor technology with screw pumps, two-way valves, jet conveyors, airlifts.
- Mechanical mixers and mixing plants.
- Loading technologies.
- Packing systems.
- Automation from HAVER & BOECKER

COMPANY HISTORY

In 1975 IBAU HAMBURG started with an immediate success:

The development of the ORIGINAL CENTRAL CONE SILO, the most important step towards the modern silo and mixing technology, related to the storage and retrieval of powdered mineral bulk products.

In the meantime all important producers use this great and economic innovation of IBAU HAMBURG.

IBAU HAMBURG

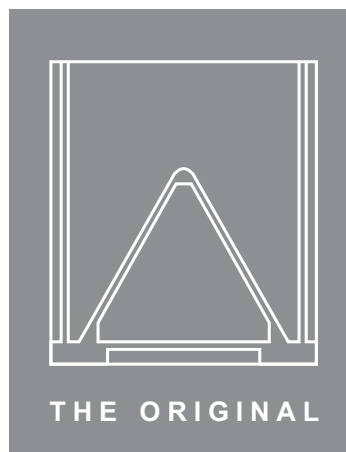
INGENIEURGESELLSCHAFT INDUSTRIEBAU MBH

Rödingsmarkt 35 · 20459 Hamburg/Germany · Telephone +49 40 36 13 09-0 · Fax +49 40 36 39 83

Do you have a question, do you need more information? Please let us know!

E-Mail: info@ibauhamburg.de

Internet: www.ibauhamburg.de



COMPANY PHILOSOPHY

With IBAU HAMBURG you are always in good company

Many years of experience help us to support our customers in implementing their projects by developing and applying customised systems and concepts of the highest quality.

As an innovative company, IBAU HAMBURG continually develops its products and components and undergoes continuous quality improvements.

COMPANY PROCESSES, RESPONSIBILITIES

Our DIN ISO 9001 certified IBAU HAMBURG MANAGEMENT SYSTEM contains the principles and responsibilities for company processes.

All operations are carried by a goal-oriented business management on all levels, as well as the strong motivation and methodological competence of our qualified employees. Our project teams work under their own responsibility, independently and performance-oriented. All IBAU HAMBURG employees work according to an internal QM manual. We are able to react quickly and flexibly to problems without high costs.

Since 1997, IBAU HAMBURG is a 100 % part of the HAVER GROUP, which is also certified in accordance with ISO 9001.



**With IBAU HAMBURG
always in good company**