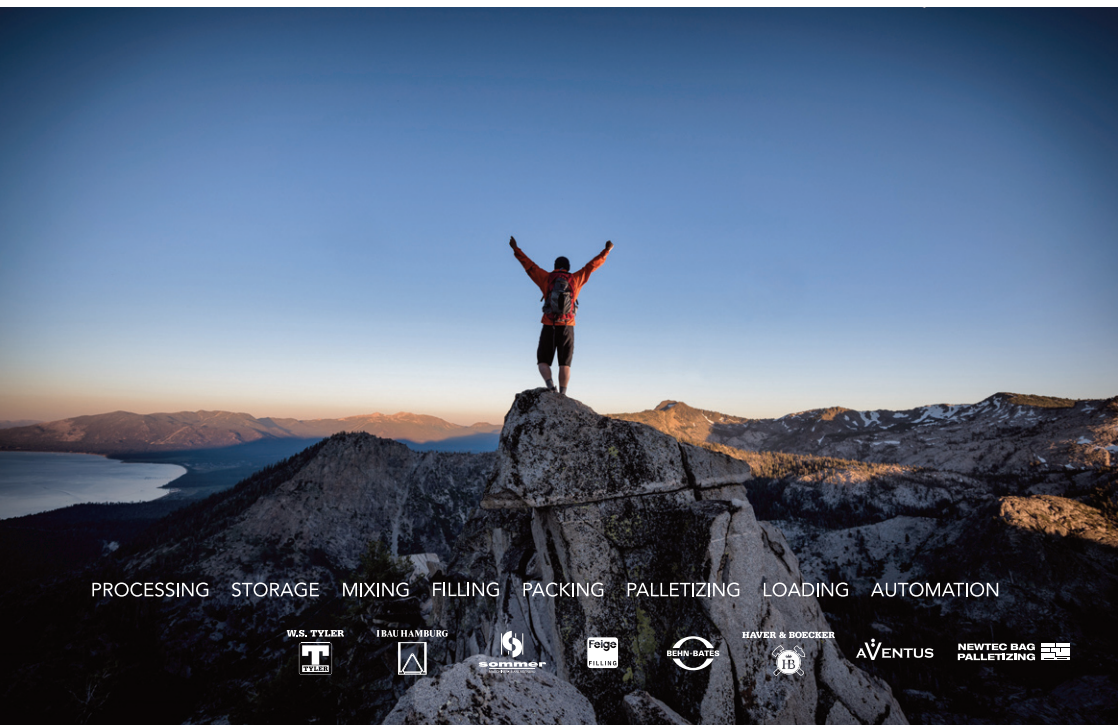


STAY IN THE LEAD

Retrofits for a reliable operational availability



PROCESSING STORAGE MIXING FILLING PACKING PALLETIZING LOADING AUTOMATION



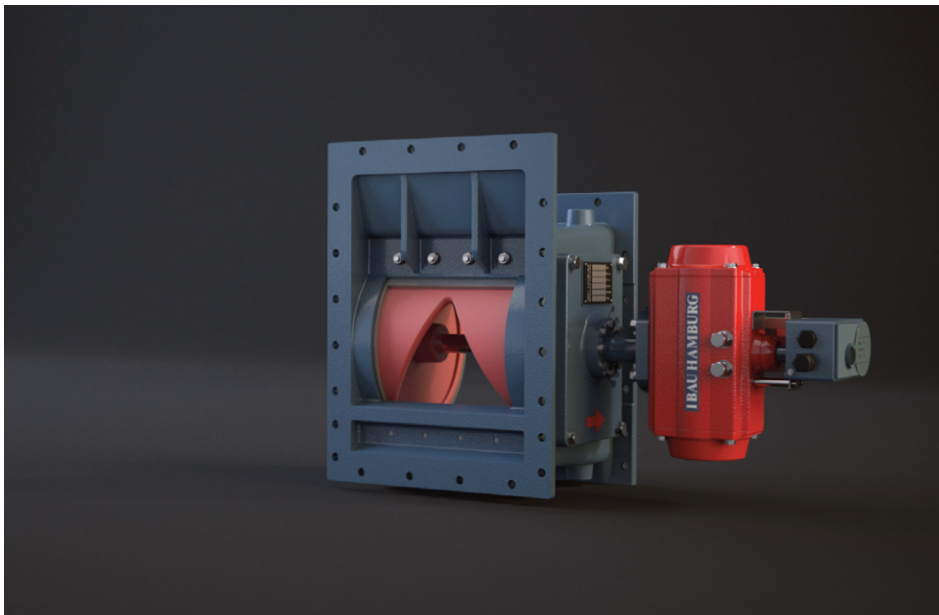
One moment of inattention and tulips let their heads hang down.
A little water would have helped here. Small effort - big effect!

Look just as carefully at your Silo facilities!
Which components are no longer state of the art?

Together we will take care of your critical components and ensure
your machine availability.

This way you stay better!





Modification of the IBAU flow-control gate to the current status with an IBAU DR-Drive



CONVERSION PACKAGE

- Modification to pneumatic swivel drive
- Complete with control unit or with solenoid valve including limit switch
- Bracket and mounting material included
- Documentation including wiring diagram

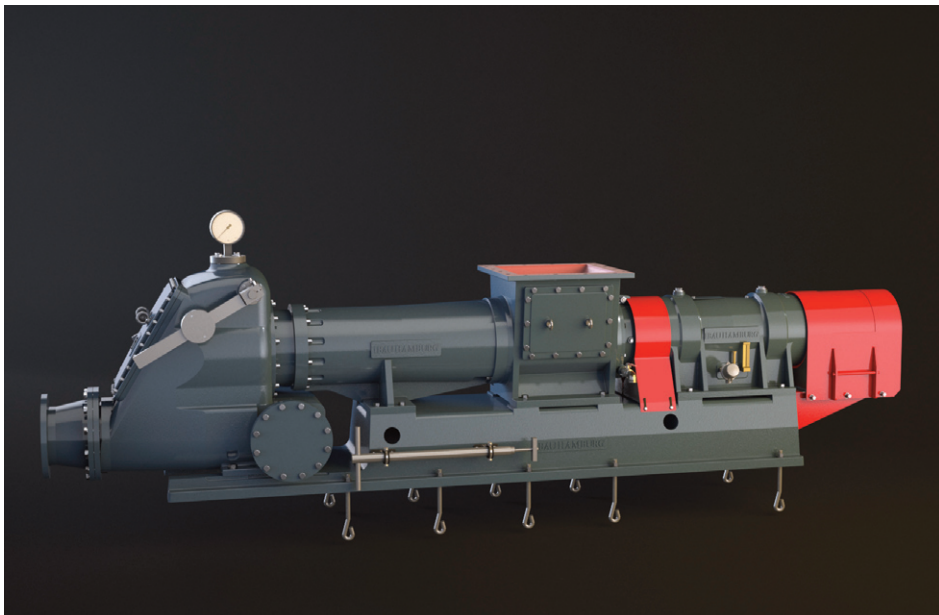
IMPROVEMENTS

- Use of control air of purity class 5 (max. particle size < 40µm)
- no additional filters on the control unit necessary!
- No actual and target value comparison necessary, thus no adjustment of the parameters is possible
- No manual approach and setting of the end positions necessary - the DR drive unit does this on its own during commissioning
- An integrated heating is available
- The roller can be opened and closed within 3 seconds

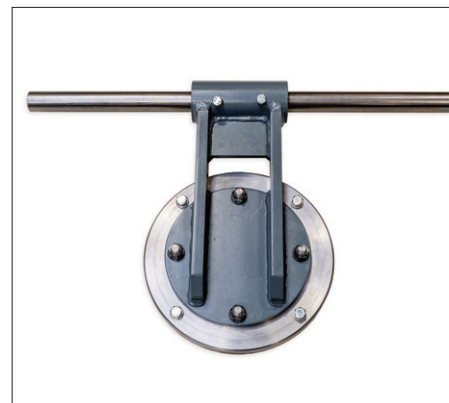
YOUR BENEFITS

- Improved safety through fast closing of the roller
- Increased reliability through more robust design
- Improved operation and maintenance

Price: € 2,000.00 plus assembly & freight



Modification of the IBAU screw pump to the current status



CONVERSION PACKAGE

- For the modification a complete non-return flap with lever and shaft in new design is required, while the wear ring can be retained.

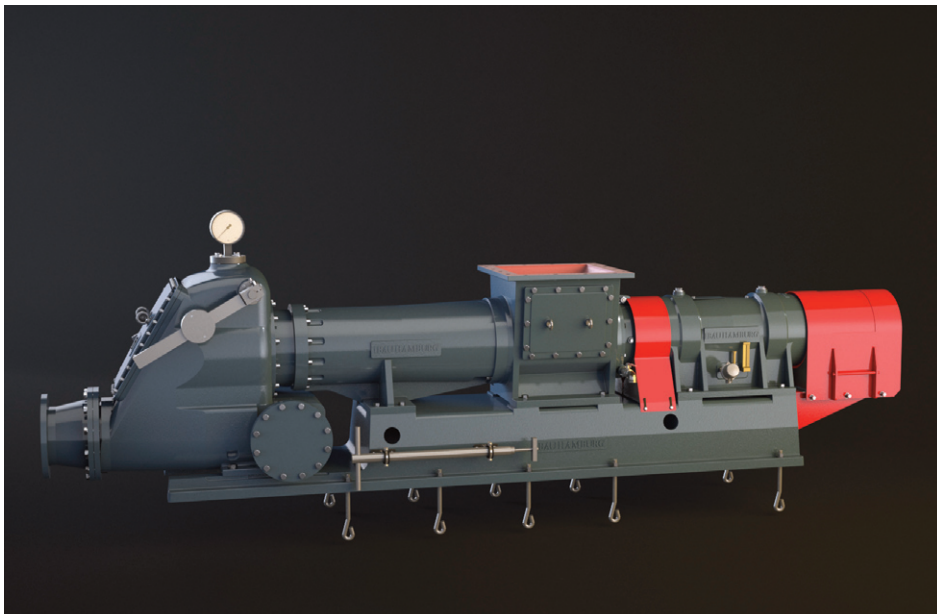
IMPROVEMENTS

- The new design of the non-return flap makes it much easier to adjust the gap between wear plate and wear ring
- Saves time when replacing wearing parts
- By using needle bearings in the bearing bushes, the frictional resistance was reduced.

YOUR BENEFITS

- The non-return valve can react more directly to changes in the discharge line back pressure by means of bearing bushes with needle bearings
- An exact adjustment of the gap mass is possible and thus reduces the wear and tear

Price: starting at € 3,400.00 plus assembly & freight



New bearing sealing concept (bearing unit)



CONVERSION PACKAGE

- The conversion only requires a new pressure and shoulder ring and new felt covers for the drive side.
- All necessary fastening materials are also included in the modification kit
- The felt seal and all O-rings must be replaced on both sides

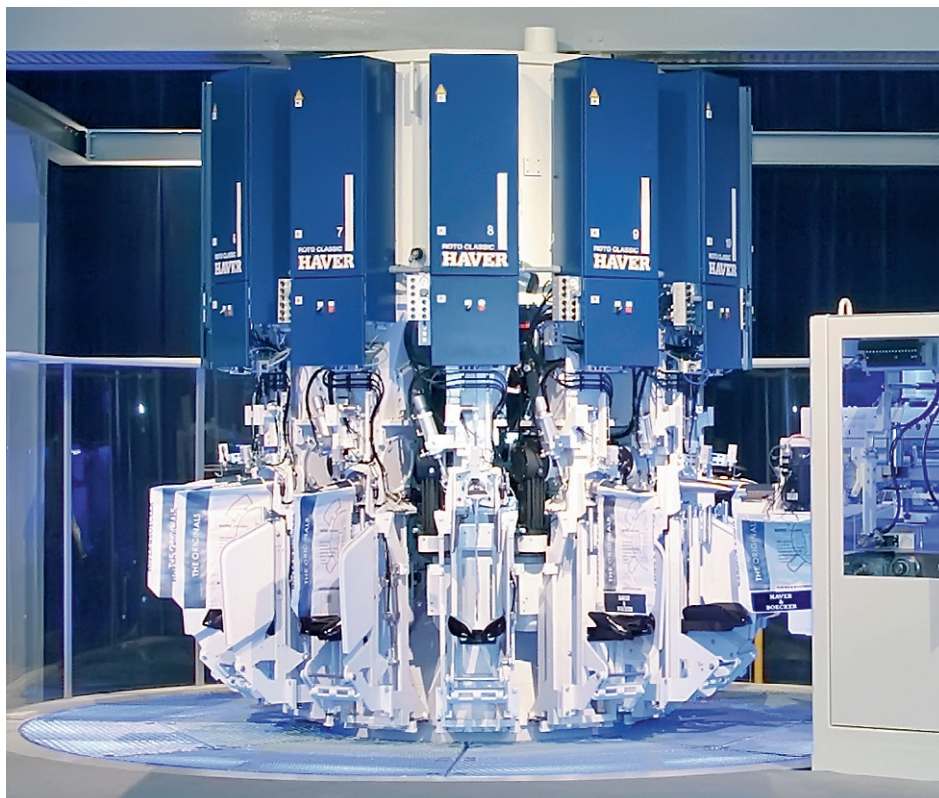
IMPROVEMENTS

- The additional labyrinth prevents the transport of larger quantities of oil to the felt ring
- The peripheral groove in the bearing housing was provided with a drain hole
- An enlarged return bore in the bearing housing leads to a faster return of the excess oil

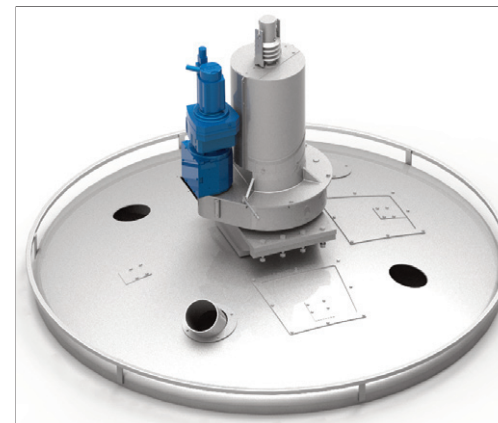
YOUR BENEFITS

- Improved lubrication of both bearings
- Prevents oil leaks at the drive side of the bearing unit
- Less wear

Price: € 2,500.00 plus assembly & freight



Conversion of the ROTO-PACKER® Rotary Drive to the latest state of the art drive technology



CONVERSION PACKAGE

- Converting to the new gear motor
- Complete with inverter and braking resistor
- Includes new brackets and mounting hardware
- Hardware and software changes

IMPROVEMENTS

- Rotary drive is capable of an emergency stop within a ¼ turn

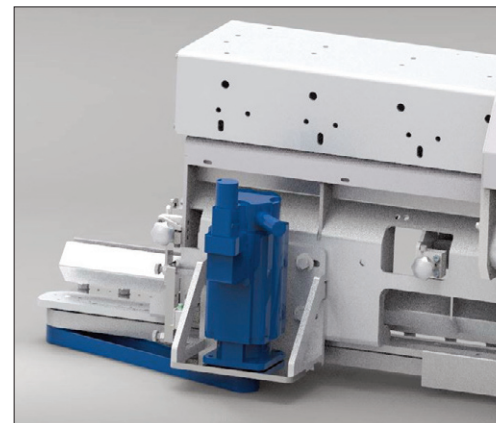
YOUR BENEFITS

- Improved health and safety standards
- Less wear for your equipment

Price: starting at € 10,000.00 plus assembly & freight



Conversion of the RADIMAT® bag transport-drive to the latest state of the art servo technology



CONVERSION PACKAGE

- Complete with servo amplifier, motor and encoder cable
- Including new brackets and mounting hardware
- Hardware and software changes

IMPROVEMENTS

- Gentle bag transport
- Long-term spare parts availability

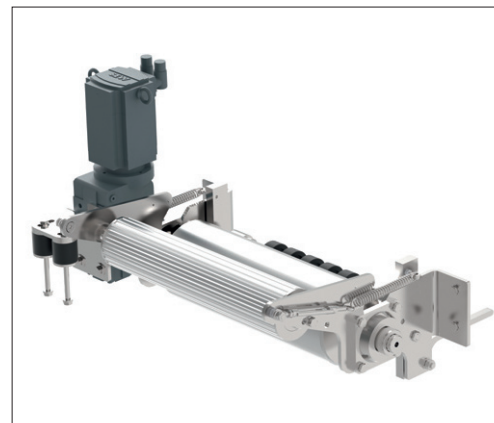
YOUR BENEFITS

- Reduction of operational and set-up costs
- Increased operational availability

Price: starting at € 9,500.00 per drive plus assembly & freight



Conversion of the film take-off drive to the latest state of the art servo drive



CONVERSION PACKAGE

- Complete with servo amplifier, motor and encoder cable
- Including new brackets and mounting hardware
- Hardware and software modifications

IMPROVEMENTS

- Gentle bag transport
- Long-term spare parts availability

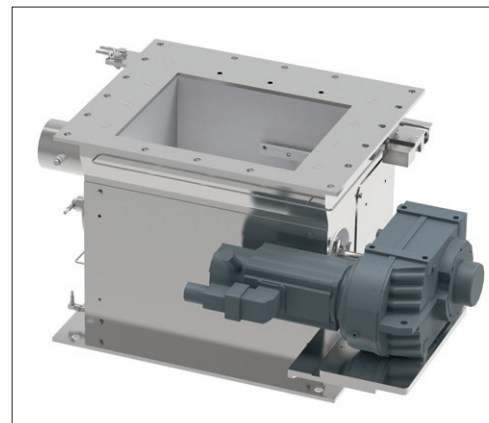
YOUR BENEFITS

- No brake wear
- Lower operating and setup costs
- Increased machine operational availability

Price: starting at € 10,350.00 plus assembly & freight



Conversion of the dosing-drive to the latest state of the art servo drive



CONVERSION PACKAGE

- Complete with servo amplifier, motor and encoder cable
- Including new brackets and mounting components
- Hardware and software modifications

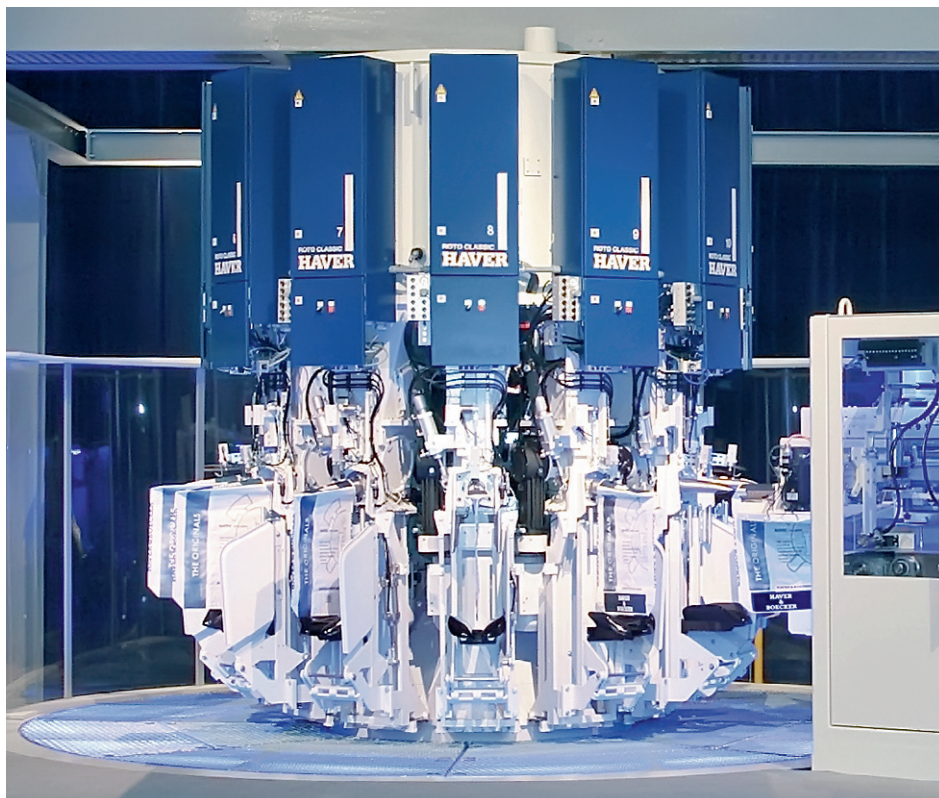
IMPROVEMENTS

- Long-term spare parts availability

YOUR BENEFITS

- Better weight accuracy
- Lower operating and setup costs
- Increased machine operational availability
- No break wear

Price: starting at € 12,650.00 plus assembly & freight



Conversion of the control panel



CONVERSION PACKAGE

- Replacement the BT1000/BT15 with the TP 104 control panel (infrared touch screen, graphics 10.4" with backlight and laminated safety glass)
- More powerful CPU for packaging machine control and the RADIMAT®
- The scope of functions is the same as for the existing control
- Hardware documentation and software adaptation

IMPROVEMENTS

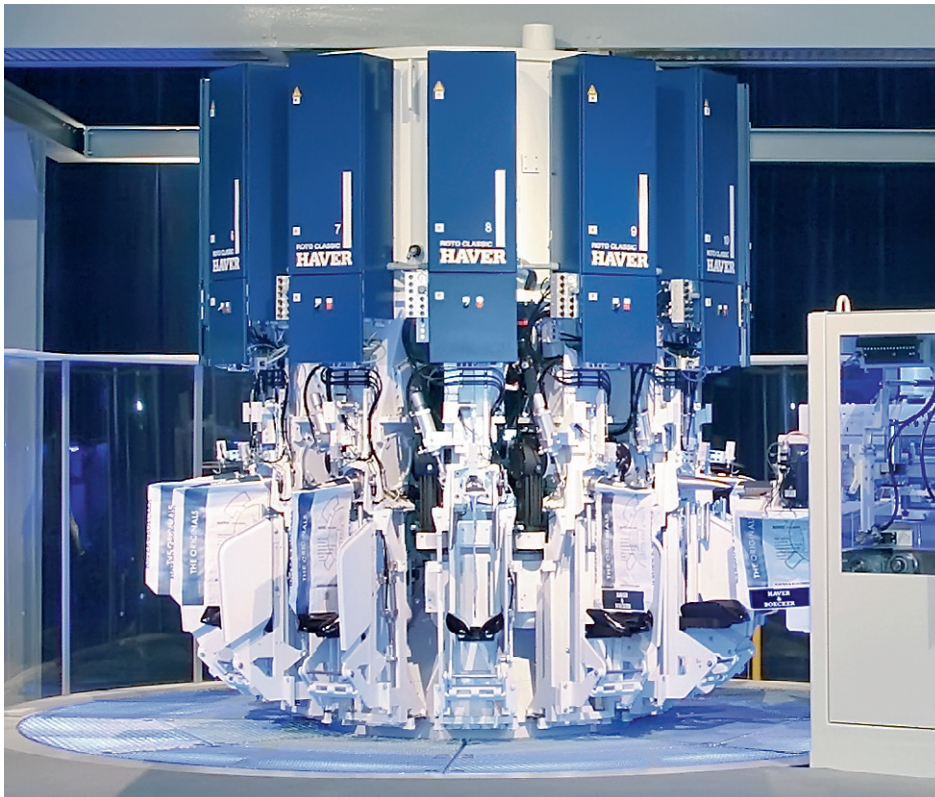
- Graphically supported operator guidance with:
 - Display of fault and operating messages
 - Buffer for error messages
 - User interface
 - Parameter input

YOUR BENEFITS

- After conversion, the machine can be safely put back into operation without additional training
- Larger, brighter display
- Scratch-resistant real glass front
- Clear, structured product type administration
- Display of error history
- Intuitive, menu-driven operation
- Color-coded display of error and operating messages

Price: starting at € 17,500.00 (Siemens control system required) plus assembly & freight
starting at € 43,500.00 (Allen Bradley control system required) plus assembly & freight

Conversion to MEC® 4.0



CONVERSION PACKAGE

- Parts for the conversion to the current MEC® weighing electronics
- User interface
- Parts for the conversion to the HAVER & BOECKER MEC® Server for the connection to the packing line controller (only required for ROTO-PACKER®!)
- Weigher cells with mounting hardware
- New counter-steering and new connecting hose
- Engineering

IMPROVEMENTS

- Easy to understand

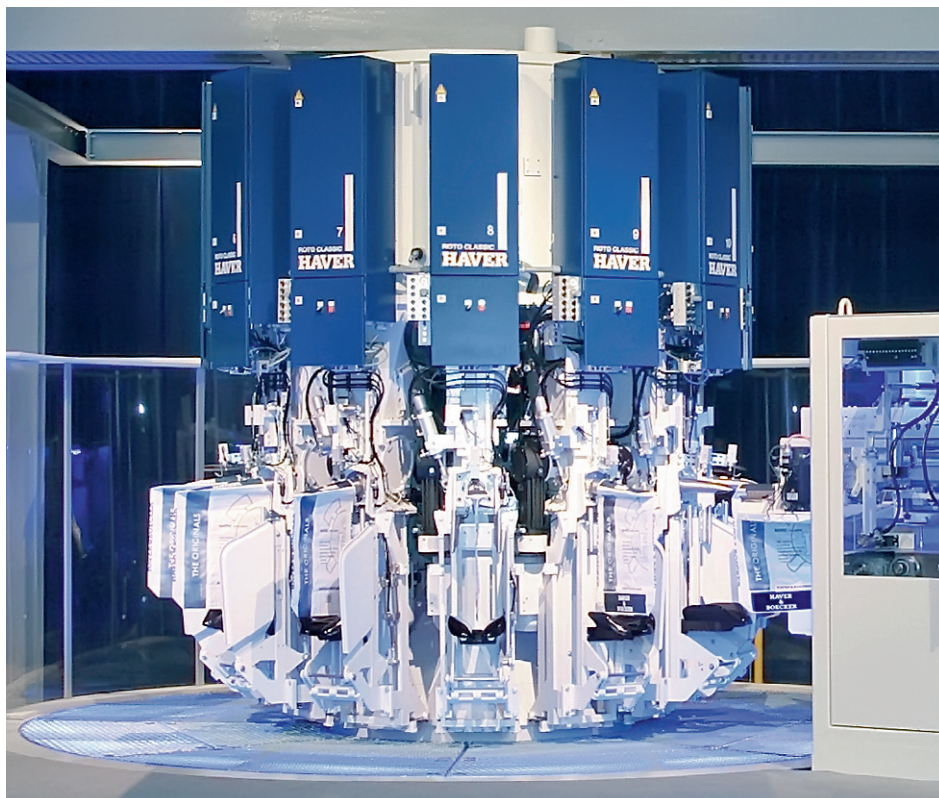
YOUR BENEFITS

- Faster processing, better control and easier operation of your process

Price for ROTO-PACKER® RSE 6 – MEC® II – 2.0: starting at € 40,000.00
plus assembly & freight

Price for INTEGRA® 2L – MEC® II – 2.0: starting at € 13,500.00 plus assembly & freight

Price for INTEGRA® FFS – MEC® II – 20: starting at € 9,240.00 plus assembly & freight



QUAT²RO® MEC® Data

File MEC4.0 Time FileStatus Parameter Stations Help

VCigen 3.0.3 © 2010 Haver & Boecker

MCU State Parameter

function configuration | Balance weigher 1 | Input configuration | output configuration | type configuration | position configuration | status of filling station | reference drives | function test | simulation | re. »

Parameter Number	Parameter Name	Unit	Type 1	Type 2	Type 3	Type 4	Type 5	Type 6	Type 7	Type 8	Type 9	Type 10	Type 11	Type 12	Type 1
1.0239	basic data														
1.0240	weight data														
1.0046	target weight	kg	50.000	50.000	50.000	50.000	50.000	50.000	50.000	50.000	50.000	50.000	50.000	50.000	50.000
1.0047	underweight limit	kg	49.500	49.500	49.500	49.500	49.500	49.500	49.500	49.500	49.500	49.500	49.500	49.500	49.500
1.0048	overweight limit	kg	50.500	50.500	50.500	50.500	50.500	50.500	50.500	50.500	50.500	50.500	50.500	50.500	50.500
1.0049	empty threshold	kg	5.000	5.000	5.000	5.000	5.000	5.000	5.000	5.000	5.000	5.000	5.000	5.000	5.000
1.2183	sample bag weight	kg	10.000	10.000	10.000	10.000	10.000	10.000	10.000	10.000	10.000	10.000	10.000	10.000	10.000
1.0241	damping														
1.0242	filling process control														
1.0256	regulator settings														
1.0257	additional dosing														
1.0258	broken bags														
1.0246	bag placing check														
1.0245	bag placing														
1.0889	bag clamp														
1.0343	inflatable sleeve														
1.0273	tipper saddle														
1.0259	bag discharge														
1.0285	blow out filling tube														
1.0247	filling box aeration														
1.0682	filling channel aeration														
1.0698	dosing outlet aeration														
1.1296	Aeration inlet box														
1.2239	Residual emptying														

CONVERSION PACKAGE

- System for reading parameters and for local data storage

IMPROVEMENTS

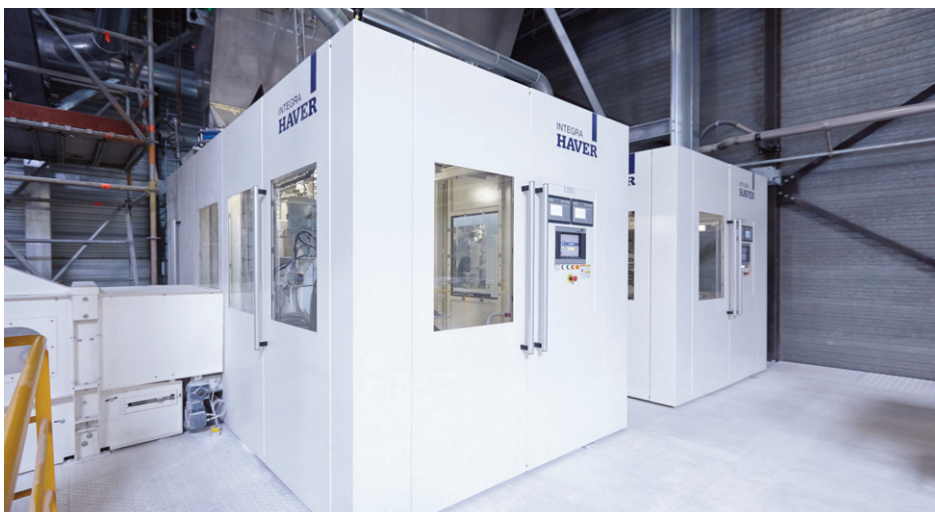
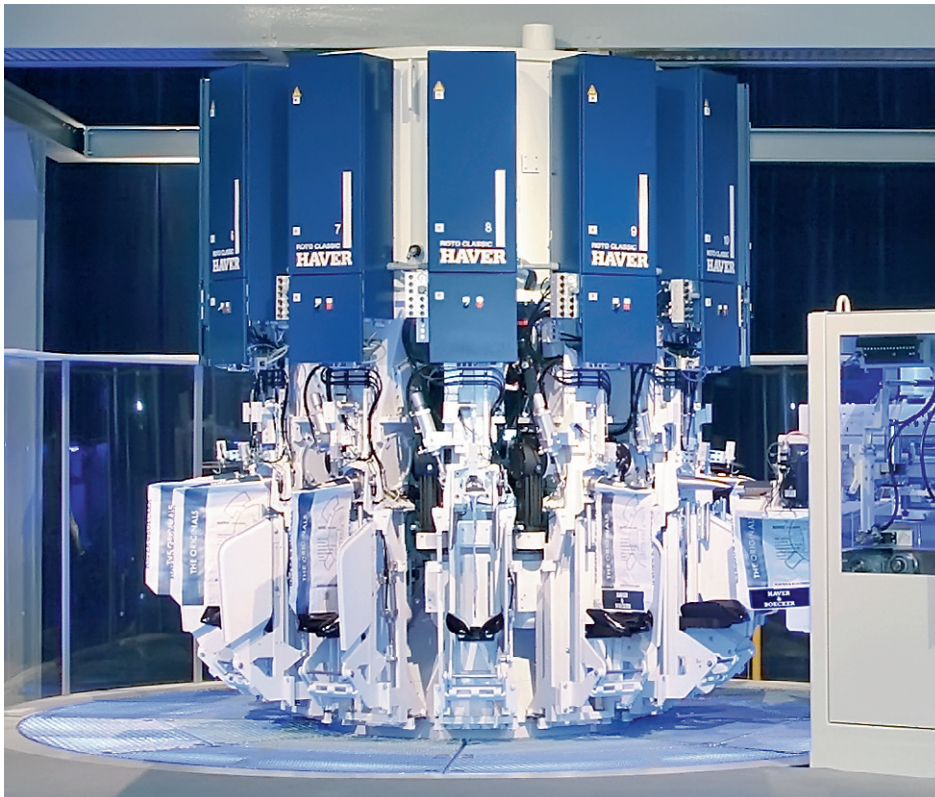
- Reading the parameters for local data backup
- Simple, fast and error-free editing

YOUR BENEFITS

- Data backup for easier, faster and error-free editing
- Comparison and copying of grade parameters on local PC
- Complete data history possible via Excel export

Preis: starting at € 2,150.00 for new machines or conversions
 starting at € 2,770.00 for MEC® 4.0 software starting 2017
 starting at € 4,500.00 for MEC® 4.0 software up to 2016

Replacement of check-weigher



CONVERSION PACKAGE

- Patented electronic check-weighing system for automatic compensation of the packing machine weigher including statistical data of filling spouts
- Interface for remote adjustment of the check-weigher

IMPROVEMENTS

- Maintenance-free and self-illuminating digital display
- Classified in 5 groups with plain text display
- Optional display of gross and net weight
- Possible parameter speech input
- Storage space for 99 varieties
- Production statistics
- Weighing system for up to 50 kg
- Data exchange with the patented filling module correction system

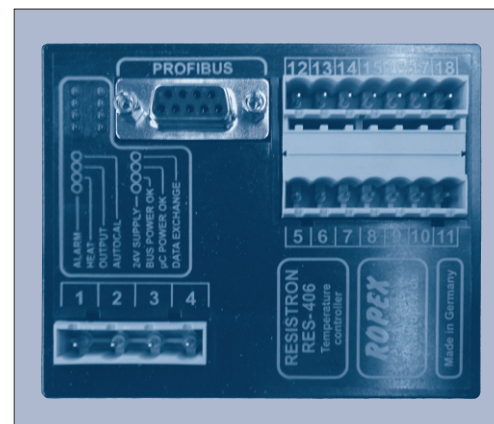
YOUR BENEFITS

- Spare parts availability

Price from € 25,000.00 plus assembly & freight



Conversion of the welding controller to Ropex RES-5006



CONVERSION PACKAGE

- Complete for top and bottom seam and corner welding
- Hardware and software modifications

IMPROVEMENTS

- Optimization of calibration
- Long-term spare parts availability

YOUR BENEFITS

- Lower operating and setup costs
- Increased machine operational availability

Price: starting at € 7,890.00 plus assembly & freight

IBAU HAMBURG · Ingenieurgesellschaft Industriebau mbH

Oliver Rathke

Tel.: +49 (0) 40 361309-70

Fax: +49 (0) 40 363983

E-Mail: orathke@ibauhamburg.de

Rödingsmarkt 35, 20459 Hamburg, Deutschland

Internet: www.ibauhamburg.com